



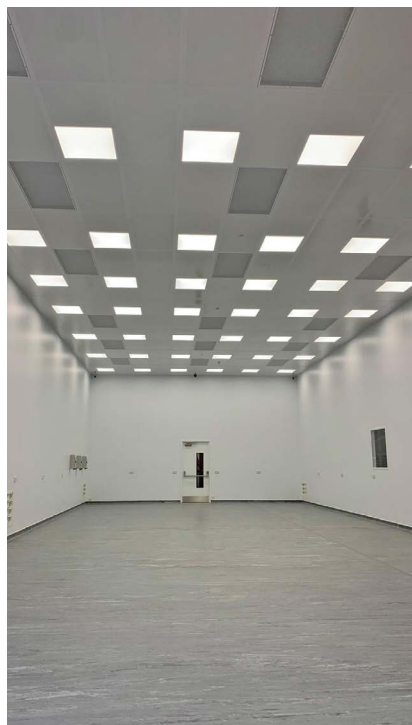
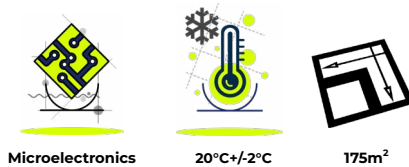
 **Philtronics**
Limited

THE CLIENT

Philtronics – a contract electronic manufacturer (CEM), offering outsource electronic manufacturing services to customers demanding fast turnaround and product reliability. A one-stop shop for contract electronic assembly, they've become key suppliers of full turnkey product into the Semiconductor and Wafer Fabrication sectors.

THE BRIEF

The cleanroom was to be specifically designed for one of Philtronics' tool manufacturing clients to allow them to work on collaborative projects. That client was a firm Guardtech had worked with previously, and so they recommend us for the build due to an excellent past experience working together.



“Philtronics is committed to continuous improvement...”

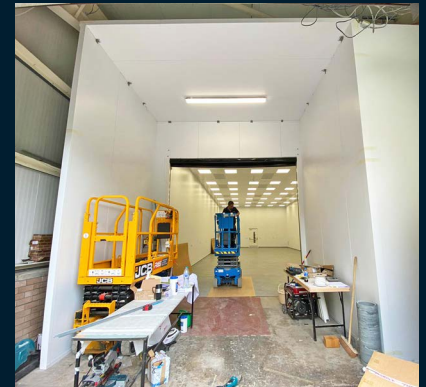
“We believe our steady growth over the past 17 years is down to our belief in providing high-quality electronic assembly, coupled with an exceptional level of service, built-in continuous improvement and competitive pricing.

“Philtronics is committed to continuous improvement in training and processes and to manufacturing excellence.”

 **Philtronics**
Limited



 Unit C The Brocks,
Homefield Rd,
Haverhill, CB9 8QP
 0330 113 0303
 sales@guardtech.com
 www.guardtechcleanrooms.com



THE TECH SPECS

A controlled environment designed, installed, cleaned and commissioned by Guardtech built to the following specification:

- ◆ **Structural:** [GT Shell Plus](#), [PIR Wall Panels](#), [GT Lid Plus](#), [Ceiling Grid & Tiles](#), [GT Deck Plus](#), [GT Access Pro](#), [GT Access Plus](#).
- ◆ **Electrical:** 13-amp flush mounted with conduit contained behind panel. [GT Lux Lite LED lights](#) to achieve 750 Lux at bench level.
- ◆ **Mechanical:** [GT Flow Plus](#), [Fan Filter Units](#), GT Air Plus VRF (Variable Refrigerant Flow) unit.
- ◆ **Monitoring:** GT Scan Lite environmental monitoring system.
- ◆ **Furniture & equipment:** Stainless steel stepover benches.





THE CHALLENGES

Ceiling height: The host room featured an impressive four-metre high ceiling – taller than the usual type of ceiling we tend to come across on the majority of our builds, which meant the Installation team had to be at their most flexible – literally!

Ongoing production: The team were charged with the task of installing the cleanroom while the operators remained in production, sharing the space with their staff while they continued manufacturing. This meant we had to be as tight as ever on health & safety and maintain effective segregation of production from construction.

Quick turnaround: As mentioned, production needed to continue on-site, so

a quick turnaround was critical for the client's operations – they required as little interruption as possible to the production environment while also ensuring that project was completed as quickly as possible. Fortunately, that's just the kind of challenge we relish at Guardtech.

THE RESULT

Guardtech Commercial Director Mark Wheeler said: "This project was a real gem from start to finish – the client really was a delight to work for and we can't thank them enough for their professionalism. "The fact that the Guardtech Installation team delivered a stunning cleanroom in such a tight timeframe is testament to their relentless dedication, creativity and expertise. "The fact we managed to produce such a high-quality build while production continued was the cherry on the cake of an all-round awesome build."

THE SOCIALS

